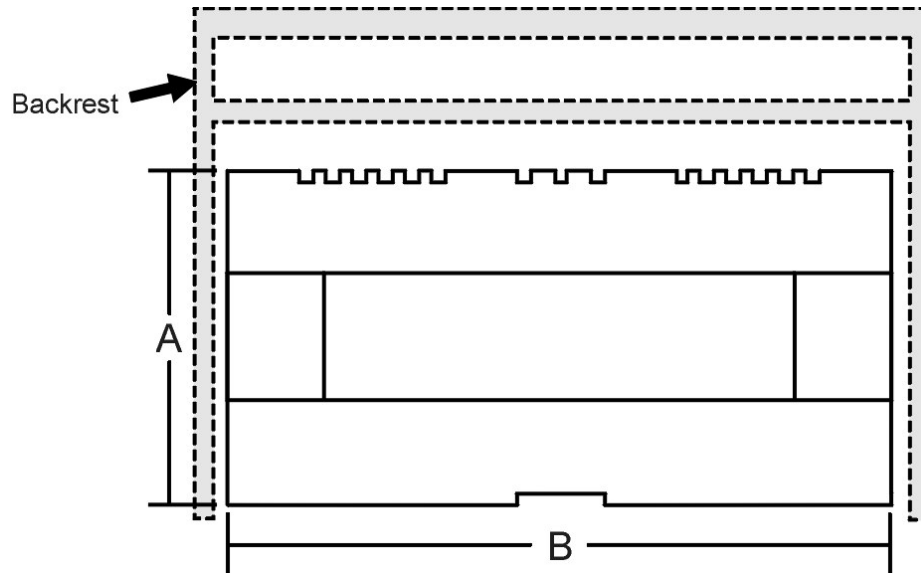


## Customer Lift Truck Information

Please have the following information available when ordering lift truck scales.

1. Lift truck carriage dimensions



**Customer's carriage must be a cleat type carriage.**

A. Height: \_\_\_\_\_ (Class II 16", Class III 20", Class IV 25")

B. Length: \_\_\_\_\_ (Do not include backrest in measurement)

2. Lift truck capacity (lb or kg): \_\_\_\_\_

3. Fork length: \_\_\_\_\_

4. Lift truck make/model: \_\_\_\_\_

5. Lift truck power (gas, propane, electric): \_\_\_\_\_

6. Lift truck voltage: \_\_\_\_\_

7. Mast maximum extension: \_\_\_\_\_

8. Does the lift truck have any carriage attachments? (fork positioner, side shifter, barrel clamp, etc.): \_\_\_\_\_

## Avery Weigh-Tronix

Fairmont, Minnesota U.S.A.  
USA Toll-Free: 800-368-2039  
USA Phone: 507-238-4461  
www.wtxweb.com

Pointe Claire, Quebec Canada  
CAN Toll-Free: 800-561-9461  
CAN Phone: 514-695-0380  
www.weigh-tronix.ca